

TABLE OF CONTENT

Introduction

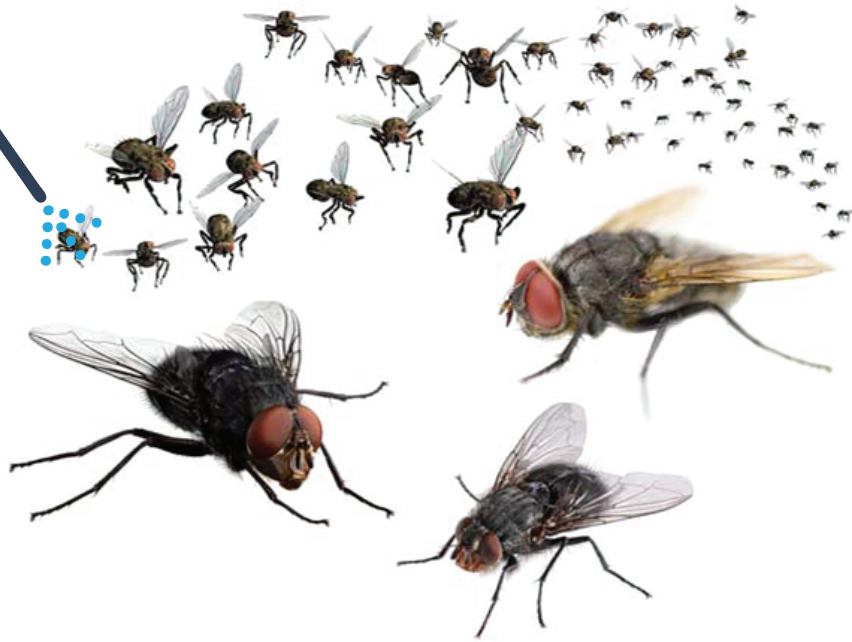
The Integrated Approach

Our Services

Our Clients

Contact Us





We use an
**INTEGRATED
APPROACH**
in our service delivery.



INTRODUCTION

WHO WE ARE

Since being established in 2011, Qzone Integrated Pest Management has gone from strength to strength building on our reputation for providing a reliable and professional service as well as excellent customer care.

We are fully focused on learning and developing new methods of pest control to stay at the very front of our field.

We constantly research changes in pest behaviour, habitats and changes in dietary sources.

We are very environmentally aware and take great care to avoid non-target species and use non-toxic methods to reduce the environmental impact of work.

We have many benefits for you our customers as we pride ourselves on integrity and business ethics, constantly striving to be the best we can. We've never stopped learning and adapting to the ever changing world of pest control and health and safety. This commitment to constant training is at the heart of everything we do. We like to think our clients keep coming back to us because they know we have the expertise to handle their needs.

OUR MISSION

Qzone's mission is to exceed customer's expectation as well as deliver practical, cost effective, easy to implement and resource efficient solutions.

OUR VISION

To prevent, as far as practicable, the introduction of pests onto the client's premises, while eliminating and controlling current infestations and to reduce the conditions that may encourage their presence.



OUR SERVICES

Residential Pest Control

Here at Q-Zone Integrated Pest Management we offer a full residential pest control service throughout Kenya, our qualified technicians are able to deal with all kinds of pest including rodents (both rats and mice), termites, wasps, fleas, flies, bed bugs and cockroaches.

Whatever the pest problem, you can rest assured knowing that we offer a fast, efficient and professional pest control service to all of our customers.

Commercial Pest Control

Q-Zone Integrated Pest Management specializes in Commercial Pest Control. We are fully committed to providing a high level of service. Working with Q-Zone, you can be sure of a fully professional, efficient and friendly service. We are able to control numerous types of pests including cockroaches, rodents (rats and mice), termites, stored insects pest and flies.

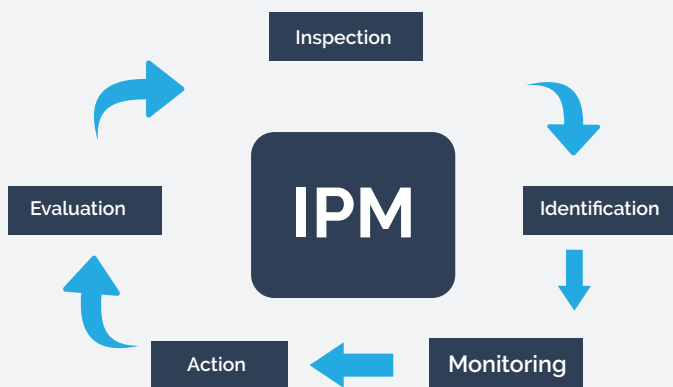
Q-Zone concentrate
on the **DENIAL** of
access to pests

Whatever the pest problem,
REST ASSURED that
we offer a fast, efficient
& professional pest
control service

*We offer
a competitively
priced and
excellent service.*

To ensure that your premises comply with Health and Safety recommendations you must make sure you maintain adequate pest control. If you have any issue with an infestation, this must be addressed immediately. This is particularly paramount if your premises deals in any way with food.

Q-Zone offer a competitively priced and excellent service. We are able to give advice on best practice when it comes to keeping your premises pest-free. To achieve a pest-free environment for you, Q-Zone concentrate on the denial of access to pests and the maintenance of an environment which discourages the development of infestation.



Integrated Pest Management

Integrated Pest Management (IPM) for food safety uses a five-stage approach to pest control, focusing on prevention measures rather than a reactive regime.

IPM integrates multiple control measures based on information gathered through inspection, monitoring and reporting, tailored to the circumstances of each site (Environmental Protection Agency, 2011).

1. Inspection

Pest control starts with the design and construction of the building, including the external and external layout and construction materials. This should prevent harbourage of pests, deny access through doors, windows, vents, pipe work, drains, etc and minimise risk of access during business operations.

2. Identification

Plan the actions needed to prevent a pest infestation, including physical, cultural and chemical methods. Specify:

- * Physical controls: maintenance of buildings to prevent access;
- * cultural controls: change operating procedures to prevent infestations, specify the frequency of monitoring, responsible persons, monitoring activities, reassessment and documentation of activities; and
- * Sanitation controls: removal of food sources such as waste, spills and inappropriately stored food; removing harbourage;
- * Chemical controls: how to eliminate pests with safe and approved pesticides suitable for use around businesses storing, preparing and displaying fresh and packaged foods and where members of the public are present;
- * An inspection regime to detect the presence of pests as early as possible, around and in buildings, in fittings, equipment, stored and displayed products and incoming supplies; training of personnel;
- * Document the control measures specified; these must be available for a review team and auditors/ inspectors.

3. Monitoring

Implement the control measures that provide the most effective results and ensure safety:

- * Appoint trained personnel to be responsible for each area of the control measures. This can include appointment of internal or external experts for monitoring pests;
- * Assign adequate resources to implement the measures;
- * Implement the control measures and inspection regime according to the plans;
- * Record actions and results in accordance with standards and legislative requirements.

4. Action

When there is a pest outbreak a clear identification of the pest is essential to determine the most appropriate control methods and the preventive actions needed to avoid re-infestation. There are six basic questions to ask about a pest and the threats that it poses to food safety

* What is the pest species?

Different species of closely related pests have different behaviour and biology that will require tailored treatment for best results.

* Where does the pest come from?

Has it come in delivered goods or gained entry or been attracted into the building due to structural defects, poor maintenance, poor hygiene, decaying goods, etc?

(IPM) for food safety uses a **five-stage** approach to pest control, **focusing** on prevention measures **rather than** a reactive regime.

* What damage does it do?
Does it pose a food safety risk to fresh, prepared or packaged goods; can it damage fittings or building structure?

* Where are they?
Conduct an inspection of the building and the surroundings using a qualified pest control person who will understand the pest and identify the harbourage places.

* How many are there?
Estimating the quantity of pest will give an indication not only of the extent of the problem but also how long they have been established on the premises.

* Why are the pests there?
Pests could be present due to supplier or transport problems, or environmental conditions that encourage or trigger pest infestation.

5. Evaluate

Evaluate the effectiveness of the pest control programme. This can include:

- * Examining pest control operations;
- * Reviewing operating procedures to reduce food sources, harbourage and contamination;
- * Review preventive maintenance procedures;
- * Documentation of the review;
- * Recommend changes and improvements to the IPM program.
- * Implement the recommended changes to the IPM program.



FUMIGATION SOLUTIONS

Qzone offers a range of professional pest fumigation treatments to keep your environment pest-free and compliant with healthy and safety regulations. We deliver practical fumigation service solutions to safeguard businesses such as shipping and cargo, manufacturing, warehousing, milling and agriculture.

Our highly trained and experienced technicians use the latest fumigant technology to avoid extensive disruption to your operations.

ELIMINATING PEST CONTROL IN COMMODITIES

Fumigation is effective in targeting Stored Product Insects such as beetles, weevils, mites and moths. SPIs can infest grain and bulk commodities such as wheat, maize, rice, nuts and animal feed – along with other raw materials used within food and feed manufacture.

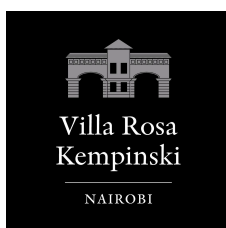
PHOSPHINE FUMIGATION SOLUTION

Qzone's Phosphine fumigation treatment is a simple, cost effective method of eliminating insect pests in bulk commodities and can be used as a curative pest control solution. It eliminates all life cycle stages of the target insect pest, with all the advantages of being non-tainting and leaving no pesticide residues.

eliminate all life
cycle stages of
the target insect pest



CLIENTS



HMH - RAINBOW



SOME OF THE PEST COVERED



COCKROCHES



RATS



FLIES



MOSQUITOS



BED BUGS



ANTS



TERMITES



BEETLE

We offer pest control solutions for;

Cockroaches, Ants, Fleas, Rodents, Termites, Flies, Mosquitoes, Bedbugs, Weevils. By the way we also offer control for Bats and Bees.

CONTACT US

Korosho Road, Valley Arcade,
Nairobi Kenya
info@qzone.co.ke
operations@qzone.co.ke
thebugman@qzone.co.ke
(+254) 706 274 483
(+254) 722 801 996